

## Our Dress Code

### Uniform

Just a reminder about our school uniform. Below are a few examples of places where you can purchase the Royal Blue uniform, including prices. Please note that it is Royal Blue only and not Navy blue which is also available from many suppliers.



From £6.99 from Pindlers



From £3.00 from Asda



From £4.00 from Asda



From £7.50 from Pindlers

To complete your child's school uniform they require:

- White/royal blue polo shirt/shirt
- Black/grey trousers/skirts/pinafore dress (tailored school shorts can also be worn in warmer weather)
- Blue gingham dress
- Grey/black tights (no bright colours)
- Black trainers/shoes with no coloured markings. Boots may be worn in winter - no Ugg style boots.

Please ensure that your child wears the correct uniform to school as we are noticing a lot of children wearing jeans, leggings, coloured tights, trainers etc which are **not** part of the school uniform.

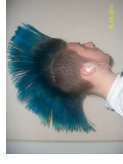
### PE Kit

PE kit should be available in school from a Monday to a Friday. PE kit consists of:

- White polo shirt/t-shirt
- Black shorts/tracksuit bottoms for outdoor PE
- Pumps/trainers for PE
- Girls long hair must be tied back for PE

### Hair colour and styles

We ask parents not to send their child to school with "extreme" hairstyles, or the sort of appearance that is likely to draw attention. This includes: mohican styles, hair extensions, shaved patterns or anything other than naturally coloured hair.



### Nails

Children are not allowed to wear false nails/nail extensions in school due to health and safety. Girls nails may not be painted during school times.

### Jewellery

On grounds of health and safety, we do not allow children to wear jewellery in our school. Children are able to wear a watch which should be removed for PE. An exception is earring studs in pierced ears. We ask children to remove these during PE and games, or to cover them with a plaster if ears are newly pierced. Parents are to supply the plasters. School accepts no responsibility for loss or damage to earrings or watches.



## Absence

### Holidays in Term Time

Please avoid taking your child on holiday during school time. These absences will be unauthorised and can have a negative impact on your child's attendance and learning.

### Illness

You must inform school of your child's illness on the first day's absence and any subsequent days. If your child's attendance percentage is below school's target of 96%, you will need to provide proof of illness, in the form of a medical appointment card or medication.

### Attendance

School's attendance target is 96%. Please be aware that illnesses and holidays taken in term time can have a huge impact on your child's percentage. Any children whose attendance falls below this target are monitored by the Behaviour for Learning Leader and a letter sent out to advise parents/carers of this concern. If there is no improvement, any future absences will be unauthorised without medical evidence. If this trend continues, parents/carers will be invited to attend an Attendance Panel Meeting in order to discuss ways in which school can help support the family to improve their child's attendance

## Safeguarding

### Door opening times

KS2 Staff will be on the playground to Meet and Greet from 8.40am and children will be expected to enter their classrooms calmly on arrival within their time slots. FS2 and KS1 doors will open at 9am, for parents/carers to drop children off. Unfortunately, at the moment, we are not allowing any parents into school due to COVID-19. .

Children arriving after 9:20am must enter school via Reception to receive their mark and dinner option. Children arriving after 9.20am will receive a late mark.

### Dogs on premises

Please note that due to Health and Safety reasons dogs are not permitted within the school grounds, even if carried. Thank you for your understanding.

### Bikes/Scooters

We have a bike and scooter area for children to leave their bikes/scooters during the school day. We do however request that children **DO NOT** ride them within the school grounds as we don't want any accidents happening.

### Picking up at hometime

All children in Year 4 and below should be collected by a responsible adult.